

# MISSOULA COUNTRY CLUB

SEPTEMBER 2008

EST. 1916

NEWSLETTER OF THE MISSOULA COUNTRY CLUB



# MANAGER'S MEMOS

BY RON SVIEN



MISSOULA COUNTRY CLUB  
3850 OLD U.S. HWY 93  
MISSOULA, MT 59804  
[www.missoulacountryclub.com](http://www.missoulacountryclub.com)

### Phone Numbers

Pro Shop .....251-2751  
Fax .....251-5344  
Clubhouse Bar & Dining Room .....251-2404  
Office .....251-2414  
Fax .....251-5896  
Maintenance Building .....549-4601

### 2008 Board of Directors

Barbara Dufour.....President, House  
Joe Johnston ..... V.P., Green, Eagle Fund  
Janet Donahue.....Sec./Treas., Long-range Plan  
Bob Knapp ..... Membership  
John Dayries ..... Rules & Games  
Allen Pickens..... Finance  
Mike McCourt..... Bylaws

### Staff

Ron Svien .....General Manager  
Skip Koprivica ..... PGA Golf Pro  
Connor Sproull..... Assistant PGA Golf Pro  
Tom Russell..... Superintendent  
Scott Lennemann..... Assistant Superintendent  
Nick Marvin .....Executive Chef  
Brook Robison ..... Sous Chef  
Sharon Jeszenka ..... Office Manager  
Dayton Scott ..... Controller  
Megan Suddaby..... Food & Beverage Director

### Office Hours

Monday – Friday 9:30 a.m. – 5 p.m.

**Bar Service Every Day 10 a.m. - 9 p.m.**

**Food & Beverage Service Hours – July**

Sunday .....11 a.m. – 9 p.m.  
Monday .....11 a.m. – 7 p.m.  
Tuesday .....11 a.m. – 9 p.m.  
Wednesday .....11 a.m. – 9 p.m.  
Thursday .....11 a.m. – 10 p.m.  
Friday .....11 a.m. – 9 p.m.  
Saturday .....11 a.m. – 9 p.m.

Due to the slowing of the season, we closed the 13th Tee Oasis at the end of August. However, Bar-Cart service will continue until the conclusion of the golfing season. Additionally, each of the service carts has been equipped with a warming unit in order to provide hot dogs on the course.

The Annual Couples Chapman Tournament was a huge success and I want to thank Tom, Skip, Megan, Nick, Brook and their respective staff members for a job well done! Also many thanks to Jean & Herb Hanich, Penny Ritchie and Vicky Houk for chairing this year's event...we certainly appreciate your dedication and hard work!

Congratulations to Travis Williams who captured the 2008 Montana State Mid-Amateur Championship. This year's championship was held at the Whitefish Lake Golf Club and even though the wind & rain were very persistent, Travis shot three very good rounds of 74-72-70 for a 216 total and a 3 shot victory. Way to go Travis...we are all very proud of you! Additionally, Missoula Country Club was awarded the perpetual team championship trophy for the low team score at this year's Mid-Amateur. Congratulations to team members Travis Williams, Bill Dunn and Gary Koprivica for bringing home the hardware!

The Long Range Planning Committee hosted an "Open House Meeting" on August 20, and even though the turnout was small in number, the exchange of information and general comments and recommendations received were very informative. Whether you did or did not attend this meeting, we welcome your written comments, thoughts and/or suggestions regarding any matters concerning our Club. Please feel free to submit any and all comments to the Business Office.



# LETTER FROM THE PRESIDENT

BY BARBARA DUFOUR

As noted in the past two newsletters, MCC is selling its current golf car fleet, which is comprised of 20 Club Car Precedent series electric cars. Each golf car will be sold “as is” and will be available on a first come, first served basis. Additionally, a \$300 earnest money deposit is also required. The projected sales price for each car is approximately \$2,500 and will be available for purchase in early November. For more information, please contact Skip Koprivica at the Pro Shop. Additionally, Manager Svien has requested bid submittals from Club Car, EZGO and Yamaha for the 2009 golf car fleet which will be delivered to

the Club on approximately March 1, 2009.

The 2009 Eagle Fund and Operating Budgets are currently being reviewed, and the meeting dates for discussion, review and budget(s) approval will be established in the very near future. We will notify each of you once these meeting dates have been confirmed.

As we approach fall, I am saddened that our summer is coming to an end; however, this also means that football season is just around the corner and this is always an exciting time here in Griz Country. Here’s to a great football season!

---

## 2008 Membership Drive

by Bob Knapp, Membership Chair/Director

Here are the early results from the letters mailed to our members last Thursday and the postcard mailing last Friday. As of late today, August 28:

Our one Regular member who is financing his initiation fee will convert to Regular, and four Trial members (of 16 total) have committed to convert to Regular.

Five who received the postcard mailer have contacted us requesting more information, plus two more already met with Ron and took application packets. One walk-in met with Ron and took an application packet, and one Associate member expressed serious interest in converting to Regular. That’s nine possible so far – and there are only sixteen openings, assuming all Trial members take advantage of this offering.

Not bad considering the drive takes place “during the month of September,” and was all in August!

---

## I'M ALRIGHT



By Carl Spackler

Remember the swimming pool incident from Caddyshack? An unidentified floating log is spotted in the pool and the swimmers scatter in panic. I approach the object in hazmat gear, examine it, and then take a bite – proclaiming it’s a candy bar. THAT’S BIG FUN!

Boredom can suck the excitement and joy out of our life and out of relationships. Sometimes we’re so deep in a rut that we can’t see out – let alone pull ourselves out. We need to work a little at making our life fun and interesting rather than submitting to the Groundhog Day routine.

For September, make it your goal to do something fun and crazy as a couple. Try something you haven’t done for awhile, something you haven’t done before, or something you’d never dream of doing. Maybe have a campfire and make smores, go stargazing into the early hours of the morning, sleep in your guest room as a visitor in your own home, or jump in the pool together.

But remember, the pool closes on September 2nd and the Baby Ruth gig has already been used... Enjoy Life!

Comments or Suggestions:  
cspackler@rocketmail.com

---

## MISSOULA COUNTRY CLUB 2008 GOLF COURSE & TOURNAMENT SCHEDULE

September	10	Wed	D.A. Davidson Golf Outing – <i>front nine shotgun @ 4:30 p.m.</i>
September	12	Fri	Grizzly Roundball Outing – <i>course closed from noon-7:00 p.m.</i>
September	22	Mon	GCSA Tournament – <i>course closed from 9:30 p.m. – 2:30 p.m.</i>

# FOOD AND BEVERAGE

BY MEGAN SUDDABY,  
FOOD & BEVERAGE MANAGER

As we are approaching fall, we have come to the end of our 2008 pool season. I believe this past year at the MCC pool was a successful one, and we were very fortunate to have a wonderful staff who continued to work hard for the membership throughout the season. I would like to thank Nikki Herzog, Bri Lipp, Brittney Nordhal, Alex Jacobson, Kyle Shoup, Kevin Bereta, Sean Weavers & Katie Neilan, for their contribution to the pool service staff.

Griz football season is here! I would like to invite all Griz fans to join us in the Clubhouse for away game Grizzly football parties. The events will consist of beverage features, football snacks & raffle prizes. Come relax and cheer on your Montana Grizzlies in the comfort of your clubhouse while enjoying ice cold beer and fantastic tailgate food.

Food and beverage specials will begin one hour prior to kickoff

September 6th vs. Cal Poly: Kickoff at 7:05pm

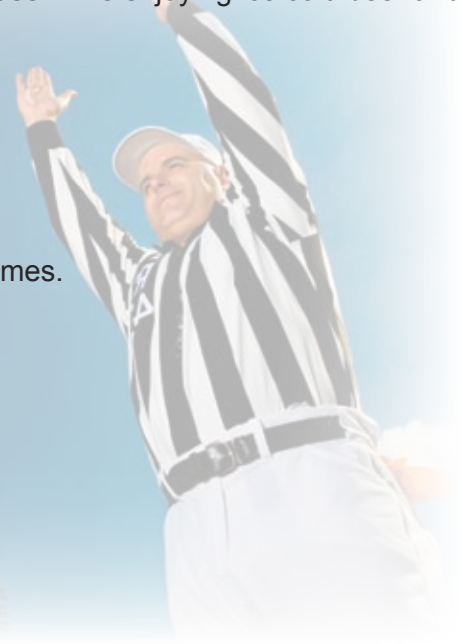
October 4th vs. Weber State: Kickoff at 1:05pm

October 11th vs. Eastern Washington: Kickoff at 3:05pm

October 25th vs. Northern Colorado: Kickoff at 12:05pm

November 8th vs. Portland State: Kickoff at 2:05pm

I hope to see you and your family in the Clubhouse for away Griz games.



## MCC DIRECTORY CHANGES

### NEW

Bonfilio, Eugene (Lynn) TR  
5449 Bigfork Rd., Msla. 59803 493-0734  
Rock Creek Cattle Co. 846-3474

Hansen, James (Pamela) TR  
P.O. Box 850, Florence 59833 777-5433

Larson, Cary (Jennifer) B  
4955 Arnica Rd., Msla. 59801 549-2546  
Msla. Nissan-Hyundai 549-5178

### CHANGES

Carlson, Troy (Deana) R  
Mann Mortgage 547-7047

Kesel, George (Laura) R  
3518 S. 3rd St. W., Msla.59804 493-6178

Weaver, William (Jean) R  
2809 Gt. Northern Lp, #410, Msla.59808

### RESIGNED

John Carnes – Social  
Larry Larson – Regular  
Terry Zahn - Social

### MEMBERSHIP STATUS AS OF 8/27/08

PLAYING MEMBERSHIPS	434	(450 max.)
<b>REGULAR</b>	<b>348</b>	<b>(includes 14 Trial Members)</b>
<b>BUSINESS</b>	<b>63</b>	<b>(80 max.)</b>
<b>ASSOCIATE</b>	<b>23</b>	<b>(40 max.)</b>
<b>NON RESIDENT</b>	<b>20</b>	<b>(25 max.)</b>
<b>SOCIAL</b>	<b>78</b>	<b>(120 max.)</b>
<b>BUSINESS SOCIAL</b>	<b>7</b>	<b>(20 max.)</b>

# PRO SHOP

BY SKIP KOPRIVICA,  
PGA GOLF PROFESSIONAL AND STAFF



With the end of summer around the corner, the cooler mornings put the feel of fall in the air. With only one tournament left on the schedule, the best time of the year to golf is just ahead of us!

On Wednesday, August 6 our Helen Tremper Ladies Invitational was very successful with a field

of 104 players. Our overall gross champion was decided in a three-person playoff with Rosalie Meltzer besting Robin Kootz and our own Jo Smith. All three players shot 82 to force the playoff. The overall low net champion went to Alane Harkin. Special thanks goes out to Shari Linjala as well as the Ladies committee and volunteers for all their hard work in organizing and making this a very successful event.

On Saturday and Sunday, August 16 and 17 sixty-four teams competed in our annual Couples Tournament. In the first flight – 1st place gross went to Lucas-Weishaar couple, 2nd gross to Doug and Jo Smith. In the 1st flight net champions the



**First Flight 1st Gross**  
Steve Lucas &  
Vicki Weishaar

Boyton's, 2nd place George Stern and Barbara Dufour. Other Missoula Country Club notables in the couples chapman are: 1st flight – 3rd net – Troy and Ann Rausch, 4th net – Randy and Lonnie Warner, 2nd flight – 1st gross – Bob and Peggy Kane, 2nd gross – Bryan and Kerri



**First Flight 1st Net**  
Brian & Meg Boyton

Flaig, 1st net Paul and Beth Loehnen, 3rd net – Gary and Betty Muralt, 4th net – Dick and Kelly Shull, 3rd flight – 1st gross – Brian and Janet Kekich, 2nd gross Dennis and Robin Nisbet, 1st net – Tom and Alice Layne, 2nd net – Loren and Julie Ward, 3rd net – Fred Ferreira and



**Second Flight 1st Gross**  
Bob & Peggy Kane

Patsy O'Keefe, 4th net – Tom and Arlene Breum 4th flight – 1st net – Steve and Vicki Dennison, 2nd net – Ed and Shari Linjala, 4th net Russ and Katy McKinnon. Special thanks goes to Jean Hanich, Vicki Houk, and Penny Ritchie in all the work they have done in order to make this tournament run successfully.



**Second Flight 1st Net**  
Paul & Beth Loehnen



**Third Flight 1st Gross**  
Brian Janet Kekich

As the summer is winding down so does our tournament schedule with only one event left along with one nine-hole outing! In September we have the D.A. Davidson nine-hole outing on Wednesday, September 10. The front nine will be closed from 4:30 p.m. until 7 p.m. The final golf event held at the club is the Grizzly Roundball Outing on Friday, September 12. The course will be closed from noon until 7 p.m. on that afternoon.

I would like to thank Jasi Acharya for the several months she worked for us over the past summer. Jasi is back in Phoenix pursuing her golf career. Good luck Jasi! Also, Chris O'Day will be heading south to Phoenix to pursue his career working in a professional sports front office. Chris has worked at the Missoula Country Club the past seven years and has been a terrific asset to my operation. I would like to thank Chris for the outstanding job he has done; you are one of the best employees I have had. Chris is a class individual and will be missed. We would like to wish Chris good luck in the future pursuing his dream! Chris' last day at the club will be Friday, September 5

Be sure to stop in the Pro Shop to check out our end of the season fall sales, which are throughout the shop. We hope everyone enjoys the beautiful fall golf weather and tries to come out and enjoy the golf course during the next couple months before winter is here!

Skip Koprivica, Connor Sproull and Staff



**Fourth flight 1st Net**  
Steve & Vicki Dennison

# TOM'S TURF TALK

BY TOM RUSSELL  
GOLF COURSE SUPERINTENDENT



Fall golf has begun at Missoula Country Club. Water requirements are reduced in the fall and less time is needed for water management. This coincides with fall projects and leaf removal.

The second year of fairway overseeding began on August 25. Areas in the fairways that are prone to

freeze/ thaw injury, ice damage and exposure injury are overseeded to bentgrass. Bentgrass is less susceptible to these injuries than poa annua. Last year the areas were core aerated, cores removed, seeded, topdressed and drug in with a drag mat. This year with borrowed equipment, the process will be simplified. Aerating and seeding will be done with the same machine, solid tines rather than pulling cores. This eliminates the most labor intensive aspects of the project. This will allow seeding to be done more rapidly and less disruptive to golfers. We will also try the borrowed SEED-avater, which has a roller behind the tines, to eliminate wash boards in high traffic areas.

Greens will quadtime aerated on Tuesday, September 2. Aeration is needed to control thatch ; eliminate layering, which impedes drainage and incorporates air pore space in the root zone. This summer hydroject aeration has been used every

3 weeks to break through layers and create pore space, but does not control thatch.

The Peaks & Prairies Golf Course Superintendents Association will have a scholarship/education tournament at MCC on September 22. All members are invited to play. The format will be 4 man teams with 2 net best balls. The proceeds help to bring the best in education to local superintendents at a reasonable cost and provide scholarships to students entering the profession. The event will be a shotgun start at 9:30 with lunch to follow. The cost is \$40 per player including lunch, but not including a cart. Please contact myself or the Pro Shop if you would like to participate. I would like to thank the Board, members and management of MCC for allowing the superintendents to hold the tournament at their facility.

We have begun EAGLE fund requests for 2009. They will include changing all sprinklers to electric, continuing to convert asphalt cart paths to concrete, driving range tee improvements and tee leveling.

Staff who are also college students have returned to school. These energetic men and women are going to continue working at MCC on the weekend crew for which I am very thankful.

The green committee has a web site for questions and comments. It is [mccgreens@gmail.com](mailto:mccgreens@gmail.com).

Please call with questions or comments. My cell number is 241-6031.

Enjoy your golf,  
Tom Russell



**2008 Couples Chapman  
Putting Contest Champions:  
Kelly & Shelly Wills**



**Mid-Am Champion:  
Travis Williams**



**Men's League Champions:  
Paul Sepp, Norm Carey, Dave Hickman,  
Dave Kinsey, Loren Ward, George Stern**

# WOMEN'S GOLF ASSOCIATION

## NEWS FROM THE RED TEES

BY SHARI LINJALA,  
MCCWGA PRESIDENT

### JULY

#### ECLECTIC WINNERS

Class A Gross	Jo Smith
Class A Net	Beth Loehnen
Class B Gross	Sue O'Neil-Stage
Class B Net	Ann Rausch
Class C Gross	Maxine Searles
Class C Net	Irene Topel
Class D Gross	Janet Donahue
Class D Net	Marlene Koch



Alane Harkin  
Overall Low Net



Rosie Meltzer  
Overall Low Gross

## Helen Tremper Ladies Invitational

The *Helen Tremper Ladies Invitational*, held on August 6th, was a huge success with 104 ladies participating from throughout Montana, Arizona, California and Idaho. The theme was **"Swing for the Gold"** and flight winners received "gold medals" in addition to prize payouts. Participants enjoyed a hot breakfast buffet set up on a festive round table in the dining room. Cookies and lemonade were welcome treats at the turn and a fabulous lunch was served following play. The Committee put together creative items including an equestrian saddle, string of tennis shoes, Olympic swimmer, torch and Olympic rings for hole prize contests. The beautifully decorated hole prizes were donated by night league teams, and many participants went home winners, between the 50/50 drawing, raffle and extra donated prizes.

**July 2008 Chip-Ins:** Vivian Brooke, Rosann Cannon. Cathy Correll (3), Janet Donahue, Judy Gilman, Shauna Ginter (2), Sue Hadnot, Linda Hober, Beth Loehnen, Betty Muralt, Sue O'Neil-Stage, Cindy Reimers, Jo Smith, Susan Toder, Kathy Turner, Shelly Wills

**July 2008 Birdies:** Cathy Correll, Shauna Ginter, Beth Loehnen (2), Susan Toder (3), Shelly Wills (2)



Helen Tremper Committee:  
Penny Ritchie, Shari Linjala,  
Kate Joyce & Patsy O'Keefe



Joyce Springer  
& Kathy Turner



## GOLF RULING:

### What if I run out of Golf Balls?

- Q.** If a player runs out of golf balls during a round, may she borrow a ball from another player?
- A.** Yes. There is nothing in the Rules of Golf that prohibits a player from borrowing a golf ball from an opponent or fellow-competitor. A player who runs out of balls may get a new supply from any source, provided she does not unduly delay play (Rule 6-7) in the process. Although golf balls are part of a player's equipment, the only type of equipment that the Rules limit the borrowing of is clubs Rule 4-4(Decision 5-1/5)

## Touring Dawn Palmer's Beautiful Gardens



## Awards Banquet September 30th 2008

All paid WGA members are invited to attend a free dinner and awards reception on September 30th. Night league, RSVP to your team captain. Day's Play, call Penny Ritchie (396-7300) for reservations. Please make reservations by 9/25.

The following will be announced:

- Most Improved Golfer
- Players with Most Birdies
- Players with Most Chip-ins
- Player with Overall Eclectic Score
- Night League Team Winners
- Day's Play Winners
- Fun Night League Winners



P.O. Box 3057 • Missoula, MT 59806  
 406-251-2404  
 www.missoulacountryclub.com

# September 2008

MISSOULA COUNTRY CLUB



SUNDAY	MONDAY	TUESDAY	WEDNESDAY	THURSDAY	FRIDAY	SATURDAY
	<b>1</b> 11 a.m. – 7 p.m. LABOR DAY LAST DAY OF POOL LUNCH MENU ONLY	<b>2</b> 11 a.m. – 9 p.m.	<b>3</b> 11 a.m. – 9 p.m.  LADIES' DAY PLAY	<b>4</b> 11 a.m. – 10 p.m.	<b>5</b> 11 a.m. – 9 p.m.	<b>6</b> 11 a.m. – 9 p.m.  GRIZ TAILGATE PARTY
<b>7</b> 11 a.m. – 9 p.m.	<b>8</b> 11 a.m. – 7 p.m.  LUNCH MENU ONLY	<b>9</b> 11 a.m. – 9 p.m.  PRIVATE EVENT IN MILLER BARBER LIBRARY AT 7:00 P.M.	<b>10</b> 11 a.m. – 9 p.m.  D.A. DAVIDSON GOLF OUTING	<b>11</b> 11 a.m. – 10 p.m.	<b>12</b> 11 a.m. – 9 p.m.  GRIZZLY ROUND- BALL GOLF OUTING PRIVATE EVENT IN MILLER BARBER LIBRARY 6:00 P.M.	<b>13</b> 11 a.m. – 9 p.m.
<b>14</b> 11 a.m. – 9 p.m.	<b>15</b> 11 a.m. – 7 p.m.  LUNCH MENU ONLY	<b>16</b> 11 a.m. – 9 p.m.	<b>17</b> 11 a.m. – 9 p.m.	<b>18</b> 11 a.m. – 10 p.m.	<b>19</b> 11 a.m. – 9 p.m.	<b>20</b> 11 a.m. – 9 p.m.  PRIVATE DINNER PARTY IN DINING ROOM DINING AVAILABLE IN LOUNGE
<b>21</b> 11 a.m. – 9 p.m.  PRIVATE PARTY IN DINING ROOM AT 1:00 DINING AVAILABLE IN LOUNGE	<b>22</b> 11 a.m. – 7 p.m.  GCSA TOURNAMENT LUNCH MENU ONLY	<b>23</b> 11 a.m. – 9 p.m.	<b>24</b> 11 a.m. – 9 p.m.	<b>25</b> 11 a.m. – 10 p.m.	<b>26</b> 11 a.m. – 9 p.m.	<b>27</b> 11 a.m. – 9 p.m.
<b>28</b> 11 a.m. – 9 p.m.	<b>29</b> 11 a.m. – 7 p.m.  LUNCH MENU ONLY	<b>30</b> 11 a.m. – 9 p.m.  WGA AWARDS BANQUET	<b>1</b> 11 a.m. – 9 p.m. OCTOBER	<b>2</b> 11 a.m. – 10 p.m.  PRIVATE FUNCTION IN DINING ROOM AT 5:00 DINING AVAILABLE IN LOUNGE	<b>3</b> 11 a.m. – 9 p.m.	<b>4</b> 11 a.m. – 9 p.m.  GRIZ TAILGATE PARTY
<b>5</b> 11 a.m. – 9 p.m.	<b>6</b> 11 a.m. – 7 p.m.  LUNCH MENU ONLY	<b>7</b> 11 a.m. – 9 p.m.	<b>8</b> 11 a.m. – 9 p.m.	<b>9</b> 11 a.m. – 10 p.m.	<b>10</b> 11 a.m. – 9 p.m.  PRIVATE EVENT IN MILLER BARBER LIBRARY 6:00 P.M.	<b>11</b> 11 a.m. – 9 p.m.  GRIZ TAILGATE PARTY