

MISSOULA COUNTRY CLUB

EST. 1916

NEWSLETTER OF THE MISSOULA COUNTRY CLUB





MISSOULA COUNTRY CLUB
 3850 OLD U.S. HWY 93
 MISSOULA, MT 59804
www.missoulacountryclub.com

Phone Numbers

Pro Shop 251-2751
 Fax 251-5344
 Clubhouse Bar & Dining Room 251-2404
 Office 251-2414
 Fax 251-5896
 Maintenance Building. 549-4601

2011 Board of Directors & Committee Chairs

Bob Tutskey President
 Tim Garden Vice President/Membership
 Penny Ritchie Secretary-Treasurer/
 Bylaws
 Justin Anderson Green
 Jim Gray House
 Jim Hansen Rules and Games
 Ron Perrin Long Range Planning
 Allen Pickens Immediate Past President/
 Finance
 Wayne Capp Eagle Fund
 Brad Dantic Disciplinary

Staff

Ron Svien General Manager
 Skip Koprivica PGA Golf Professional
 Tom Ask Superintendent
 Sharon Jeszenka Office Manager
 Dayton Scott Controller
 Melissa Nordberg Food and Beverage
 Manager
 Sean Ehlert Head Chef

OFFICE HOURS

Monday – Friday 9:00 a.m. – 5 p.m.

BAR SERVICE HOURS

Sunday – Saturday 10 a.m. – 9 p.m.

LUNCH SERVICE HOURS

Sunday – Saturday 11 a.m. – 7 p.m.

DINNER SERVICE HOURS

Thursday, Friday, Saturday
 5 p.m. – 8 p.m.

MANAGER'S MEMOS

BY RON SVIEN

The fall aeration program was initiated on September 19 and 20 with the greens being aerated with 5/8" hollow core tines. The health of the greens has been spectacular all year and we expect a quick recovery. Plans are underway to provide more tee space area on the course by adding five forward tees on holes 4, 9, 11, 14 and 15, as well as increasing the back tee areas on holes 1, 3, 4, 5, 9, 11, 14 and 16. This will provide four regular tees for membership play - White, Red, Blue, Black, as well as Gold tees for junior members. The golf course will be re-rated this fall and the new scorecards for 2012 will reflect these changes. I want to thank Tom Ask and his crew for providing great playing conditions throughout the year, and we look forward to many more years to come.


Financial Perspective: Through August 31, 2011; Bar/Dining reflects a Net Ordinary Income (NOI) Profit of \$23,532 as compared to a Loss of (\$51,129) in 2010 – a betterment of \$74,661. Many thanks to Melissa Nordberg and Sean Ehlert for their efforts!

A membership information meeting has been scheduled for Wednesday, October 26 @ 6:30 PM. The Board and Management will present the 2012 Operating Budget, 2012 Eagle Fund Budget, upcoming Board of Directors election information, as well as general and miscellaneous discussion items for member review and comment. Thereafter, the 2012 Operating Budget, 2012 Eagle Fund Budget and the 2012 Board Election Ballots will be mailed to the membership in early November for return by December 14, 2011. Again, this information meeting will be held on Wednesday, October 26 at 6:30 PM - please plan to attend!

2011 Men's League "DA VASE" Champions



**Blackfoot
 Communications:**
 Kevin Opitz, Ron
 Ramsbacher, Kelly
 Wills, Matt Morris,
 Bill Squires, Dave
 Opitz, Bill Dunn



ACERS

Terry White
 9/9/11 - Hole 2
 175 Yards - 5 Iron

Kirk Duce
 9/16/11 - Hole 17
 140 Yards - 9 Iron

ETIQUETTE

BY THE HOUSE RULES AND GAMES COMMITTEE

When practicing on the driving range, please avoid hitting shots onto the 18th fairway. It creates a legitimate safety issue when balls land on the 18th fairway. Please do your best to aim more towards the center of the driving range. Also, please fill in your divots with sand and seed no matter where you

are on the golf course. If you do not have sand and seed with you, then please replace your divot as best you can. This also applies to the practice area over at the triangle. Lastly, always repair your ball marks on our greens.

MCC DIRECTORY CHANGES

NEW MCC DIRECTORIES ARE IN PROGRESS

NEW

Quade, Barbara and Robert - Social

RESIGNED

Mike Bossard – Non-Resident

Jerry Gall – Regular

Don Nicholson – Social

Scott Palmer – Regular

Shane Puyear/Farmers State Bank – Business

Chad Ward - Regular

MEMBERSHIP STATUS AS OF 9/30/11

PLAYING MEMBERSHIPS	376	(450 max.)
REGULAR	301	
BUSINESS	55	(80 max.)
ASSOCIATE	10	(40 max.)
SILVER CIRCLE	10	(10 max.)
NON RESIDENT	18	(25 max.)
SOCIAL	47	(120 max.)
BUSINESS SOCIAL	4	(20 max.)

FROM THE HANDICAP CHAIRMAN

BY ANDY SHOTT

Have you ever tried playing tennis with a pro? How about a beginner? Not a lot of fun unless you have 2 players of relatively equal ability. Thanks to the handicap system of golf, you can compete fairly with 2 players of very differing abilities.

My name is Andy Shott, AKA Shottmaker, and I am the new Handicap Chairman for MCC. I have presided over the handicap committee for the Men's Invitational for several years now so I know the complaints and headaches that this job engenders. Here are a few items that will change for the rest of this year and next year, too

First, there are some changes made by the Montana Chapter of the USGA. They now update handicaps on the 1st and the 15th of each month, so be sure to check your handicap for whichever tee you are going to play before you head out for a round. Also, you now have the opportunity to post your scores online. Their website is <http://www.msgagolf.com>.

Second is the reporting of scores. Report all your scores. I repeat – turn in all your scores. Many golfers know you can turn in a score for nine holes if that's all you played. What many don't know is that you can turn in an 18 hole score even if you played only 13 or more holes. Or a 9 hole score if you played 7-12 holes. See note sheet available at the Pro Shop for how to compute this – or just give the card to the Pro Shop and they'll put it in for you.

One problem I see all the time—and I have done in the past is not reporting my highest scores—those days when I have a particularly bad round. It's

important to post all your scores—even the bad rounds.

Another thing you won't have to worry about next year is posting your tournament scores. Skip and the crew at the Pro Shop have consented to posting all of our member's scores in tournaments played at the club. Even for rounds played for the President's Cup.

Also – the Pros will post all scores from the WMCPGA PRO-AMS. The only additional requirement is that next year, if you want to play tourneys at MCC and you are a member, then you must have your handicap established at MCC. This only affects a few members, but for them this is something that I will insist on.

Finally, and this is a big change by the Montana Chapter of the USGA, there is now the requirement to post your scores during the winter months when you play golf in regions of the country that are not "closed."

While regions like Montana are "closed" from November 1 until April 1, most regions of the country are open and scores from these areas should be put in, online, if possible. Whether you spend a couple months away or are just down in the warm weather for a few rounds in the sun, be sure and put in your scores at the MSGAGOLF.COM website. Your trend index will show you what your current handicap index is and when the Montana season opens in April, your current handicap will be up-to-date.

If you have questions about the MSGAGOLF.COM website, feel free to send me an email at behappp@hotmail.com and I'll help you get started.

PRO SHOP

BY SKIP KOPRIVICA
PGA GOLF PROFESSIONAL AND STAFF



We had a great month of September here at the Missoula Country Club as we transitioned from summer warmth, to smoky skies, and into beautiful autumn days. The front nine was aerated on Monday, September 19, and the back nine had its day on Tuesday, September 20.

Prior to the necessary maintenance of the greens, we hosted the first ever

Garden City Cup and the annual Grizzly Roundball Tournament. The Garden City Cup is a Ryder Cup style 2-day match play event pitting ten Missoula Country Club players versus ten players from the Western Montana team. The Western Montana teams consisted of players from Eagle Bend, Canyon River, Larchmont, and Hamilton golf course. Foursome matches, better known as alternate shot, began play on the morning of Sunday, September 4, and Missoula Country Club got off to a solid start

taking 3 ½ of the available 5 points. The afternoon Fourball matches saw phenomenal action, and the teams split the available 5 points for 2 ½ each. Going into Labor Day morning's Single Matches, the Missoula Country Club had a slim 6 point to 4-point lead. Competition remained close in singles play, but in the end the Home team took the victory. Final results: 11 ½ points Missoula Country Club versus 8 ½ points for Western Montana. Congratulations to our team consisting of Tim Garden, Derek Colberg, Mat Stevenson, Gary Koprivica, Ron Ramsbacher, Bob Hasquet, RJ Patterson, Dirk Cloninger, Justin Anderson, and Matt Sheridan!

On Friday, September 16, we hosted the annual Montana Roundball Tournament. The 167-player field included 18 celebrities, former Grizzly athletes, many Missoula Country Club members, and local golf personalities. With 37 teams competing, the team from Spokane, WA including Nate Steilen, Tommy Servine, Eric Sandberg, Mark Shultz, and anchored by Coach Wayne Tinkle, took first place with an impressive scramble score of 18-under 53. Let us all thank Bill Weaver, Julie Tonken, Wayne Tinkle, and the rest of the tournament committee for their time and hard work organizing this great event. Also, thank you to everyone who competed and donated money through the auction all in an effort to help fund the University of Montana Basketball Program.

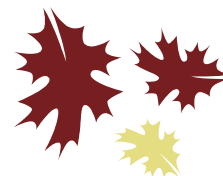
The Community Hospital Tournament on Friday, September 23 was the last scheduled event for the season. We had 80 golfers and this tournament benefits Community Medical Center.

All of the tournament credit for Men's League has been posted including Playoff payouts and point payouts. Please use your credit by November 15, and remember...many of you still have prepaid green fees remaining that if not used will expire by the end of the golf season.

The golf shop currently has discounted golf shoes and men's golf shirts, and we will have a variety of fall clothing coming in over the next couple weeks. Also, the fall is a great time to prepare for the next season. Please do not hesitate to ask us about your equipment needs for next season. Also, don't forget to check and see if your clubs need to be re-gripped. Lastly, please come out and enjoy our wonderful golf course as we hope for continued great weather!



Look out Bill Haas...here comes Graham Tutskey!



FOOD & BEVERAGE

BY MELISSA NORDBERG



October is here and the air is becoming crisp & cool. It's time to come into the Clubhouse and warm up. We will have new seasonal beers on tap and many new wine selections coming soon. Enjoy the hearty tastes of fall with our New Seasonal Menu, including all-new Dinner Entrées, a few new Lunch Entrées and a delicious new Dessert Menu.

The kitchen started roasting our own turkey for the sandwiches, and it is so flavorful. For the Dinner

Entrées Chef Sean has come up with fresh new ideas that will satisfy everyone's palates. Don't be afraid to try the Montana "Game" Burger made with Blackened Buffalo & Elk Burger, it will definitely keep you warm this fall!

The Desserts are my favorite - they will include Pumpkin Cheesecake, Triple Layer Chocolate Mousse Cake, Bread Pudding with Vanilla Ice Cream and Crème Brulee. They are all baked fresh here in our MCC kitchen, by our fabulous crew. Thanks guys!

Don't forget, we always value your input on your dining experience. Always feel free to fill out a comment card. We love hearing those positive comments!



FRIDAY NIGHT HAPPY DAYS

5-7 PM

Great Appetizers and 2 for 1 Libations

October 7, 14, 21, 28

Missoula Country Club Garden City Cup



MCC Garden City Cup Team

Ron Ramsbacher, Skip Koprivica - Captain, Dirk Cloninger, Derek Colberg, Tim Garden, Matt Sheridan, Gary Koprivica, Bob Hasquet, Mat Stevensen, R.J. Patterson, Justin Anderson



Western Montana Garden City Cup Team

David Meeks (Eagle Bend), Ron Ramsey (Eagle Bend), Jeff Swanson (Larchmont), Mike Mattson (Canyon River), Mathew Koehler (Canyon River), Mark Denton (Canyon River), Jason Lehtola - Captain (Hamilton), Scott Gray (Hamilton), Adam Curry (Larchmont), Ernie Frankforter (Hamilton)

ASK TOM ASK

BY TOM ASK
GOLF COURSE SUPERINTENDENT



We are extremely pleased to report to you that John York, Missoula Country Club's mechanic, has returned to us safely from his tour of duty in Iraq. He will be spearheading special projects this fall for us including a much needed maintenance facility spruce up. We are very proud of John and are happy to have him with us

again. For those who know John and would like to stop by and say hi, please feel free to do so. We know he would appreciate it. His back to work date is October 11.

Our Fall Management Plan is well under way. We have already given most of the golf course a good shot of fertilizer. Unfortunately, we anticipated a normal late September weather pattern which would have helped us get the turf healthy without significant growth. Instead we received record high temperatures which contributed to an incredible flush of growth. This coupled with a reduced work force because of the start of school, has led to "U. S. Open" rough. We will have it under control shortly.

Aerification has been completed! We are very pleased with the way that things turned out. Those of you who have played post greens aerification may have noticed that there have been several different techniques used for the sanding process. We are conducting an experiment to see which method might help us get the greens back in tip top shape the fastest. We appreciate your patience!

Plans are being developed at present to institute new mowing patterns around the greens. The purpose will be two fold. First, it will help make playing conditions a little fairer and secondly, it should make our greens surrounds more aesthetically pleasing. Please let us know what you think.



General Manager Svien and Superintendent Ask won the 2011 Western Montana John Deere Championship held at the Big Mountain Golf Club in September. In November Tom and Ron will play in the John Deere National Championship in Scottsdale.

2011 MCC Couples Chapman Tournament



WOMEN'S GOLF ASSOCIATION

NEWS FROM THE RED TEES

BY LISA BUSEMAN
MCCWGA PRESIDENT

Fall is upon us and the course looks amazing. Hopefully the weather will hold and we'll all shoot a few more rounds before the snow hits.

The Awards Banquet was held on September 27th with a Black and White theme. More on this next month with pictures, etc.

The Fall Luncheon is November 2nd and all WGA members are welcome. Please email me at lbuseman@sealy.com to make your reservations.



Susan Langley and Shelly Wills

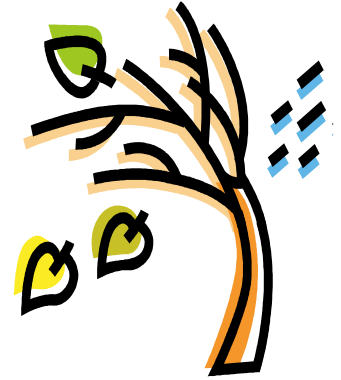


Connor, Edwin, Linda, Bonnie, Ann

Congratulations to the winning league teams!

1st – Winners

Karen Colberg
Sue Rowe
Jean Hanich
Kelly Shull
Janet Kekich
Monica Weisul
Joanne Napp
Carol Mather



2nd – Golf Bags

Sandi Blair
Sue Hadnot
Janet Donahue
Shawna Ginter
Kari Flaig
Julie Gemer-Williams

3rd – Turf Queens

Carol Van Valkenburg
Doris Nordstrom
Shari Linjala
Jane Doss
Susan Toder
carol Fischer
Leslie Halligan



Golf Quote: "I have a tip that can take five strokes off anyone's golf game - it's called an eraser."

Arnold Palmer



PO. Box 3057 • Missoula, MT 59806
 406-251-2404
www.missoulacountryclub.com

October 2011

MISSOULA COUNTRY CLUB



SUNDAY	MONDAY	TUESDAY	WEDNESDAY	THURSDAY	FRIDAY	SATURDAY
						1 11 am – 8 pm Dinner Menu
2 11 am – 7 pm Lunch Menu	3 11 am – 7 pm Lunch Menu	4 11 am – 7 pm Lunch Menu	5 11 am – 7 pm PRIVATE LUNCH IN DINING ROOM Lunch Menu	6 11 am – 8 pm Dinner Menu	7 11 am – 8 pm HAPPY DAYS 5-7 PM Dinner Menu	8 11 am – 8 pm GRIZ AWAY GAME 2 FOR 1 DRINKS 4-6 PM
9 11 am – 7 pm Lunch Menu	10 11 am – 7 pm Lunch Menu	11 11 am – 7 pm Lunch Menu	12 11 am – 7 pm Lunch Menu	13 11 am – 8 pm Dinner Menu	14 11 am – 8 pm HAPPY DAYS 5-7 PM Dinner Menu	15 11 am – 8 pm PRIVATE DINNER MILLER BARBER LIBRARY Dinner Menu
16 11 am – 7 pm Lunch Menu	17 11 am – 7 pm Lunch Menu	18 11 am – 7 pm Lunch Menu	19 11 am – 7 pm Lunch Menu	20 11 am – 8 pm Dinner Menu	21 11 am – 8 pm HAPPY DAYS 5-7 PM Dinner Menu	22 11 am – 8 pm GRIZ AWAY GAME 2 FOR 1 DRINKS 3-5 PM Dinner Menu
23 11 am – 7 pm Lunch Menu	24 11 am – 7 pm Lunch Menu	25 11 am – 7 pm Lunch Menu	26 11 am – 7 pm Lunch Menu	27 11 am – 8 pm Dinner Menu	28 11 am – 8 pm HAPPY DAYS 5-7 PM Dinner Menu	29 11 am – 8 pm Dinner Menu
30 11 am – 7 pm Lunch Menu	31 11 am – 7 pm Lunch Menu	1 11 am – 7 pm NOVEMBER Lunch Menu	2 11 am – 7 pm LADIES' FALL LUNCHEON IN DINING ROOM AND LOUNGE Lunch Menu	3 11 am – 8 pm Dinner Menu	4 11 am – 8 pm HAPPY DAYS 5-7 PM Dinner Menu	5 11 am – 8 pm Dinner Menu