

# MISSOULA COUNTRY CLUB

NOVEMBER 2008

EST. 1916

NEWSLETTER OF THE MISSOULA COUNTRY CLUB



# MANAGER'S MEMOS

BY RON SVIEN



MISSOULA COUNTRY CLUB  
3850 OLD U.S. HWY 93  
MISSOULA, MT 59804  
[www.missoulacountryclub.com](http://www.missoulacountryclub.com)

### Phone Numbers

Pro Shop .....251-2751  
Fax .....251-5344  
Clubhouse Bar & Dining Room .....251-2404  
Office .....251-2414  
Fax .....251-5896  
Maintenance Building .....549-4601

### 2008 Board of Directors

Barbara Dufour.....President, House  
Joe Johnston .....V.P., Green, Eagle Fund  
Janet Donahue....Sec./Treas., Long-range Plan  
Bob Knapp ..... Membership  
John Dayries ..... Rules & Games  
Allen Pickens.....Finance  
Mike McCourt..... Bylaws

### Staff

Ron Svien .....General Manager  
Skip Koprivica ..... PGA Golf Pro  
Connor Sproull..... Assistant PGA Golf Pro  
Tom Russell ..... Superintendent  
Scott Lennemann..... Assistant Superintendent  
Nick Marvin .....Executive Chef  
Brook Robison .....Sous Chef  
Sharon Jeszenka ..... Office Manager  
Dayton Scott ..... Controller  
Megan Suddaby..... Food & Beverage Director

### Office Hours

Monday – Friday 9:30 a.m. – 5 p.m.

### Bar Service Hours

Sunday, Monday, Tuesday, Wednesday  
10 a.m. – 8 p.m.  
Thursday, Friday, Saturday  
10 a.m. – 9 p.m.

### Lunch Service Hours

Sunday, Monday, Tuesday, Wednesday  
11 a.m. – 4 p.m.

### Dinner Service Hours

Thursday, Friday, Saturday  
4 p.m. – 9 p.m.

The Board, Finance Committee, and Staff are continuing to work on the 2009 operating budget, which will be mailed to the MCC Membership by December 1, as the 2009 Operating Budget Approval Meeting has been scheduled for Wednesday, December 17, 2008 @ 6:00 pm.

As previously announced, the proposed 2009 Eagle Fund Budget Approval Meeting has been scheduled for Wednesday, November 5, 2008. This meeting will begin @ 6:00 p.m., and we encourage you to attend this meeting.

Tom Russell and crew closed down the irrigation system in mid October and are making preparations to ready the course for winter. The golf course was in excellent condition throughout the entire season, and we thank the golf course maintenance staff for a job well done!

Megan Suddaby and the food and beverage staff are preparing for the fall/winter season and some wonderful festivity events, including a December Children's Christmas Party, have been planned. Event fliers will be sent to the MCC Membership in early November via e-mail and regular mail.

Best wishes for a great Thanksgiving Holiday!

## Restaurant & Bar - Hours of Operation

### October - November - December 2008

Sunday, Monday, Tuesday, Wednesday  
Lunch Service 11 am to 4 pm / Bar Service 10 am to 8 pm

Thursday, Friday, Saturday  
Lunch service 11 am to 4 pm / Dinner Service 4 pm to 9 pm  
Bar Service 10 am to 9 pm

### January / February 2009

Sunday & Monday  
Clubhouse Closed – No Food & Beverage Services Available

Tuesday & Wednesday  
Lunch Service 11 am to 4 pm / Bar Service 10 am to 8 pm

Thursday, Friday, Saturday  
Lunch Service 11 am to 4 pm / Dinner Service 4 pm to 9 pm  
Bar Service 10 am to 9 pm

## LETTER FROM THE PRESIDENT

BY BARBARA DUFOUR

Fall has arrived in Montana, and the Griz are on the prowl. I don't like to see summer end, but a couple of weeks ago I was playing golf at the Club – it was beautiful. Sun shining, crisp air, and incredible colors everywhere you looked. The flowers are gone now, but Dawn is busy planting about 6,000 bulbs – spring will be amazing!

On October 8 the Board held a meeting of the membership to explain the financial situation, answer questions, and hear suggestions. Our membership is down for many reasons, green fees were lower than expected, and we didn't book as many special events as in the past. Expenses were on target and less than 2007. Management has monitored staffing and reduced payroll expenses significantly. Regardless, there is a deficit that has to be funded. In the past an operating loss was rolled into the liability to the Eagle Fund. The bylaws state, and the Board agrees, there will be no more loans out of the Eagle Fund to finance operations.

The Club is paying on a \$488,400 loan to

the Eagle Fund at a rate of 6.5%. The source of funds is the \$24 per month per playing membership. Depending on the membership level we anticipate retiring this debt in 4 years, 10 months. The goal is to restore CASH in the Eagle Fund and end the \$24 per month paid by the members.

Management, the Finance Committee, and the Board are working on the budget for 2009. The budget will reflect realistic income based on a declining membership and a tumultuous economy. It is a painful process. The membership asked the Board to present a total package of a proposed special assessment and dues increase.

On November 5, 2008 there will be a meeting at the Club to explain and vote on Eagle Fund proposed purchases.

Trivia – The weaving that hangs in the dining room was commissioned in 1988. The artist is Widney Moore from Boise, Idaho and is titled "Lolo Peak Vista". It is 5'6" x 10'6" and is of the 18 hole and green.



# I'M ALRIGHT



By Carl Spackler

November is a little bleak at the Club. All the color has left the trees, and it's mostly me and the gopher and his allies and friends, the harmless squirrel and the friendly rabbit.

When emotions get a little drab at home, I try to brighten things up with flowers for the Mrs. I tell the guys in the maintenance shed it's like money in the bank. And, you never want to let that account get overdrawn. Occasionally, I find myself in the dog house; sometimes it's something I did, and sometimes something I didn't do. And, the really big one is when I don't even know what I did! I can tell when the

account is running low, and I need to make a tongue in cheek floral deposit.

I love the glow on her face when I send flowers. Whether it's one rose, a dozen, or two dozen roses they are always appreciated and enjoyed. It's fun to make up and get back on the same emotional wave length as a couple. If things are going really smooth, you might try to mess up just so you can make up. That shouldn't be too hard for most guys! Enjoy life!

Comments or Suggestions:  
cspackler@rocketmail.com

## PRO SHOP

BY SKIP KOPRIVICA,  
PGA GOLF PROFESSIONAL AND STAFF



Winter is near! There are still a few beautiful days left, so make sure to take advantage before the snow flies. We hope to see everyone out enjoying the Club and using the rest of their Pro Shop credit.

We would like to congratulate Chuck Turner for his hole in one

on hole #12!

Most improved golfers for the 2008 season were: Men – Ryan Prentice, Ladies – Jillian Walsh; Junior Boys – Robbie Jacobsen; Junior Girls – Maggie Crippen. Congratulations on such a great season!

The winners of our Men's President's Cup were: Champion – Ken Crippen; 2nd – Dave Hickman; tied for 3rd – Travis Williams and Mike Bryan.

A couple of things to remember before the season comes to an end. All Pro Shop credit needs to be used by November 20. Pro Shop credit and prepaid green fees do not carry over to next year. The last day to enter scores in the computer was approximately October 26, and the last handicap card will be available in the Pro Shop the first week of November.

I recommend to anyone who owns his/her own cart to make sure to do proper maintenance to it before you put it away for the winter. On a gas cart I would recommend that you fill your gas tank all the way to the top. On an electric cart be sure you fill each battery just over the top of the cells with distilled water, clean all your batteries and posts of corrosion, and check the tires to be sure they are at 26 psi.

I would like to thank my staff for a great 2008 season – Pro Shop: Connor Sproull, Chris O'Day, Kevin O'Day, Kyle Mittlestadt, Rose Stepanek, and Jasi Acharya; Bag Room: Matt Ward, Justin Reynolds, Brian O'Day, Joseph Montalban, Chase Hoffman, Charles Mockler, Joe Balsam, Brad Solander, and Kevin Lympus. I would also like to thank Tom Russell and his staff, Megan Suddaby and her staff, Ron Svien, Dayton Scott, and Sharon Jeszenka for all their hard work and great working relationships!

The Pro Shop will be open until November 20 and will re-open for Christmas shopping starting December 5. Come in and check our fall specials on clothing and equipment. We provide complimentary gift wrapping.

Thanks to all the members for their support during the 2008 golf season.

Skip Koprivica, Connor Sproull, and Staff

# TOM'S TURF TALK

BY TOM RUSSELL  
GOLF COURSE SUPERINTENDENT



The irrigation system is blown out and leaves are falling in earnest, the fall season is upon us. One change this time of year is bunker maintenance. Bunkers that are raked daily without irrigation get very fluffy. Bunkers are now blown more than raked to keep them firmer and more playable. Samples of the

sand are being analyzed to see what can be done to make them more playable and consistent for the coming year.

Eagle Fund requests are now out to the membership. If the irrigation upgrade to electric control, as discussed in the last newsletter, is approved, work will begin the next day. The driving range tee mat will be completed during the off season as well, if approved.

Fairway fungicide applications for snow mold prevention will occur in the next few weeks. Greens will be aerated and topdressed the last week in November. The rest of the winter play will be on temporary greens. Projects this time of year are leaf removal, painting of the pump houses, and finish work at the shop and in the new break room. In November, hopefully, work begins on the irrigation system.

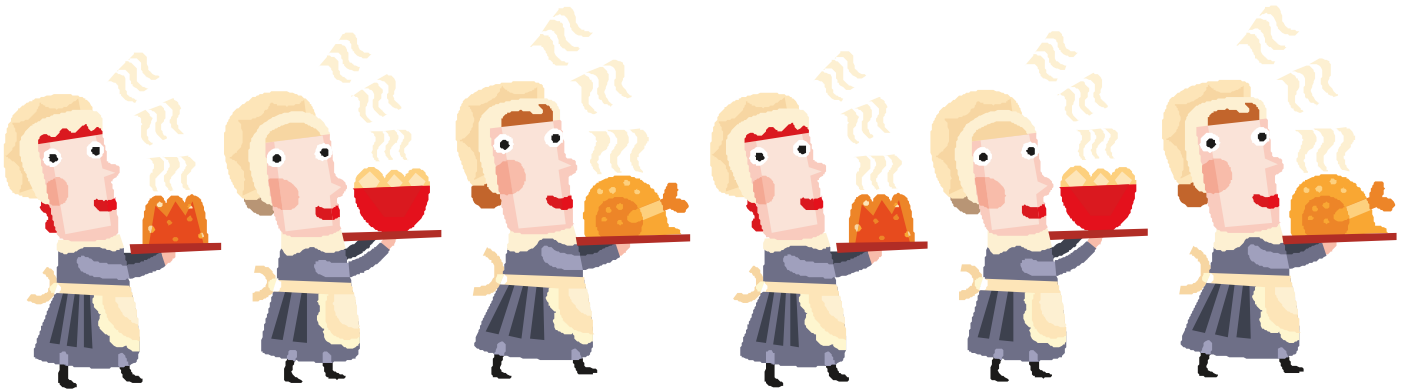
The last day for power carts will be Thursday, November 20.

This is a good time of year to fertilize your home lawns to build carbohydrate reserves for the coming year. The grass will winter healthier and be ready to go in the spring.

The green committee has an e-mail address for questions and comments. It is [mccgreens@gmail.com](mailto:mccgreens@gmail.com).

Please call with questions or comments. My cell number is 241-6031.

Enjoy your golf, Tom Russell



## MCC DIRECTORY CHANGES

### CHANGES

Lohn, Elizabeth S. S  
717 Anglers Bend Way, Msla. 59802

### RESIGNED

Al Bradley/Bitterroot Valley Bank – Business  
Rich Zins/Bitterroot Valley Bank – Business  
John Edwards – Associate  
Brian Rapp – Non-Resident  
Shane Carlson – Social  
Patrick HagEstad – Social  
Gary Louquet - Social

### MEMBERSHIP STATUS AS OF 10/22/08

<b>PLAYING MEMBERSHIPS</b>	<b>428</b>	<b>(450 max.)</b>
<b>REGULAR</b>	<b>346</b>	<b>(includes 8 Trial Members)</b>
<b>BUSINESS</b>	<b>60</b>	<b>(80 max.)</b>
<b>ASSOCIATE</b>	<b>22</b>	<b>(40 max.)</b>
<b>NON RESIDENT</b>	<b>19</b>	<b>(25 max.)</b>
<b>SOCIAL</b>	<b>67</b>	<b>(120 max.)</b>
<b>BUSINESS SOCIAL</b>	<b>7</b>	<b>(20 max.)</b>

*Missoula Country Club thanks the University of Montana Ladies' golf team and coach JoAnne Steele and the Hellgate High School golf team and coach Rob Henthorn for filling in divots on the golf course.*



## **TRIVIA QUESTION**

How many tees has the Club purchased in 2008?



80,000 natural tees (2 3/4")  
40,000 white tees (2 1/8")

# WOMEN'S GOLF ASSOCIATION

## NEWS FROM THE RED TEES

BY SHARI LINJALA,  
MCCWGA PRESIDENT



## 2008 AWARDS BANQUET

The Awards Banquet, hosted by Twisted Sisters, was held on September 30. The theme was "Sex in the City" and everyone, including the wait staff, came dressed to the nines. Each lady received a complimentary "Cosmo" and dinner consisted of delectable hors d'oeuvres, including quesadillas, scallops in a shell, salmon stuffed mushrooms, salmon flowers with cream cheese, chicken on skewers, veggies with dip, various selections of sushi and for dessert, beautiful (and yummy) dipped strawberries. Ann Rausch served as master of ceremonies, and the "Sisters" began the fun with a skit. The Twisted Sisters team members are Kim Becker, Kim Browne, Rae Lynn D'Angelo, Shelley Geiszler, Ann Rausch, Penny Ritchie, Amy Sellman and Pattie Tornabene. THANK YOU ladies for providing us with such an entertaining evening!!



Ann Rausch

### MOST IMPROVED GOLFER

Ann Rausch went from a 22.7 handicap to 16.1. Other notable golfers to mention are: Shauna Ginter (33.1 to 29.0), Amy Sellman (19.7 to 17.0), and Carol VanValkenburg (13.4 to 11.6). Congratulations to all of you!!!

**NOTICE:**  
*Golf For Women* Magazine  
ceased publication as of  
August 2008.



Shauna Ginter, Susan Toder,  
Dee Butorac



'Strutting Their Heels'  
Best Stilettoes: Tammie Roy



Twisted Sisters



Carol Hayes, Evelyn Kougioulis,  
Marlene Koch



Heidi Dewey, Maxine Searles,  
Margie Gall, Barb Schrimpf



1st Place, Bunker Babes: Betsy Buckley,  
Barbara Dufour, Ellen Carey, Neta Gail  
McAfee, Betty Andrews-Muralt



Tied for 2nd Place, Chix with Stix:  
Shan Toussaint, Brenda Keating,  
Tammie Roy, June Lyons. Not pictured:  
Irene Topel, Traci Mytty, Ginnie Horner



Tied for 2nd Place, Turf Queens:  
Shari Linjala, Carol VanValkenburg,  
Doris Nordstrom, Jane Doss, Trish  
Larsen, Anne Carlson



P.O. Box 3057 • Missoula, MT 59806  
 406-251-2404  
 www.missoulacountryclub.com

# November 2008

MISSOULA COUNTRY CLUB



SUNDAY	MONDAY	TUESDAY	WEDNESDAY	THURSDAY	FRIDAY	SATURDAY
						<b>1</b> 11 am - 9 pm
<b>2</b> Lunch Service 11 am-4 pm Bar Service 10 am-8 pm	<b>3</b> Lunch Service 11 am-4 pm Bar Service 10 am-8 pm	<b>4</b> Lunch Service 11 am-4 pm Bar Service 10 am-8 pm	<b>5</b> LADIES' FALL LUNCHEON PRIVATE FUNCTION IN MILLER BARBER LIBRARY	<b>6</b> 11 am - 9 pm	<b>7</b> 11 am - 9 pm	<b>8</b> 11 am - 9 pm GRIZ TAILGATE PARTY 2:00 PM
<b>9</b> Lunch Service 11 am-4 pm Bar Service 10 am-8 pm	<b>10</b> Lunch Service 11 am-4 pm Bar Service 10 am-8 pm	<b>11</b> Lunch Service 11 am-4 pm Bar Service 10 am-8 pm	<b>12</b> Lunch Service 11 am-4 pm Bar Service 10 am-8 pm PRIVATE LUNCHEON IN DINING ROOM	<b>13</b> 11 am - 9 pm	<b>14</b> 11 am - 9 pm PRIVATE EVENING FUNCTION IN MILLER BARBER LIBRARY	<b>15</b> 11 am - 9 pm
<b>16</b> Lunch Service 11 am-4 pm Bar Service 10 am-8 pm	<b>17</b> Lunch Service 11 am-4 pm Bar Service 10 am-8 pm	<b>18</b> Lunch Service 11 am-4 pm Bar Service 10 am-8 pm	<b>19</b> Lunch Service 11 am-4 pm Bar Service 10 am-8 pm	<b>20</b> 11 am - 9 pm	<b>21</b> 11 am - 9 pm	<b>22</b> 11 am - 9 pm
<b>23</b> Lunch Service 11 am-4 pm Bar Service 10 am-8 pm	<b>24</b> Lunch Service 11 am-4 pm Bar Service 10 am-8 pm	<b>25</b> Lunch Service 11 am-4 pm Bar Service 10 am-8 pm	<b>26</b> Lunch Service 11 am-4 pm Bar Service 10 am-8 pm	<b>27</b> 11 am - 9 pm CLOSED HAPPY THANKSGIVING	<b>28</b> 11 am - 9 pm CLOSED FOR HOLIDAY DECORATING	<b>29</b> 11 am - 9 pm
<b>30</b> Lunch Service 11 am-4 pm Bar Service 10 am-8 pm	<b>1</b> Lunch Service 11 am-4 pm Bar Service 10 am-8 pm DECEMBER	<b>2</b> Lunch Service 11 am-4 pm Bar Service 10 am-8 pm	<b>3</b> Lunch Service 11 am-4 pm Bar Service 10 am-8 pm	<b>4</b> 11 am - 9 pm PRIVATE DINNER IN DINING ROOM MEMBER DINING AVAILABLE IN LOUNGE	<b>5</b> 11 am - 9 pm PRIVATE FUNCTION MEMBER DINING AVAILABLE IN MILLER BARBER LIBRARY	<b>6</b> 11 am - 9 pm PRIVATE FUNCTIONS IN ALL AREAS NO OTHER MEMBER DINING AVAILABLE