

MISSOULA COUNTRY CLUB

EST. 1916

NEWSLETTER OF THE MISSOULA COUNTRY CLUB





MISSOULA COUNTRY CLUB
 3850 Old U.S. Hwy 93
 Missoula, MT 59804
www.missoulacountryclub.com

Phone Numbers

Pro Shop 251-2751
 Fax 251-5344
 Clubhouse Bar & Dining Room 251-2404
 Office 251-2414
 Fax 251-5896
 Maintenance Building. 549-4601

2010 Board of Directors & Committee Chairs

Allen Pickens President/Finance
 Bob Tutskey Vice President/Membership
 Penny Ritchie.... Secretary-Treasurer/Bylaws
 John Dayries..... Green
 Jim Gray..... House
 Tim Garden Long Range Plan
 Justin Anderson Rules & Games
 Wayne Capp Eagle Fund
 Brad Dantic..... Disciplinary
 Rocky Ginter - ad hoc Handicap
 Joe Johnston..... Immediate Past President

Staff

Ron Svien..... General Manager
 Skip Koprivica PGA Golf Pro
 Connor Sproull Assistant PGA Golf Pro
 Tom Russell Superintendent
 Scott Lennemann . Assistant Superintendent
 Richard Kolenda..... Executive Chef
 Sharon Jeszenka..... Office Manager
 Dayton Scott Controller

OFFICE HOURS

Monday-Friday 9:00 a.m. – 5 p.m.

BAR SERVICE HOURS

Sunday – Saturday
 11 a.m. – 9 p.m.

Sunday, Monday, Wednesday

Lunch menu 11 a.m. – 7 p.m.

LUNCH SERVICE HOURS

Tuesday, Thursday, Friday Saturday
 11 a.m. – 4 p.m.

Dinner Service Hours

Tuesday, Thursday, Friday, Saturday
 4 p.m. – 9 p.m.

MANAGER’S MEMOS

BY RON SVIEN

I want to personally thank the membership for their patience during a very trying time while the golf course has been on the mend. By the time you receive the June newsletter the course will be open and our membership will be playing again. Although the course will not be perfect, it will get better and better within a short period of time as the crew continues to provide care and nurturing to the grass areas that were adversely affected.

I am pleased to announce that Melissa Nordberg will be joining as the Food and Beverage Supervisor. Melissa brings a wealth of experience and will begin her work here by mid June. Please welcome Melissa to the Missoula Country Club!

We will conclude with the Friday Happy Days 2 for 1 Libations special as of June 4, however, we will be offering this feature on occasion throughout the summer and fall. This program was a success and will be reintroduced again on Friday’s during the winter and spring season beginning in December.

With the beginning of the “Pool Season” we are also introducing the “Chuck Wagon” snack bar facility, which is located at the back of the pool closest to the driving range. This facility will serve both the pool users as well as the golfers with a front and back service counter. The Chuck Wagon will be open seven days per week during the months of June, July, August and September from 11:00 AM to 6:00 PM. Here is the Chuck Wagon Menu!

CHUCK WAGON POOL MENU

Grilled Chicken BLT\$9.50
 Country Chicken Sandwich\$9.00
 MCC Cheese Burger \$7.50
 Plain MCC Burger\$7.00
 Filet of Beef Sandwich\$12.00
 Char-Broiled Bratwurst\$8.00
 Hot Dog\$4.50

~ accompanied with potato chips, fruit or pasta salad ~

SWIMMING POOL FOOD SERVICE

MCC provides a regular pool menu from 11:00 AM to 8:00 PM. All charges will carry a standard 15% gratuity, which will be added to the total. No food from outside MCC is allowed.

2010 SWIMMING POOL SEASON

The pool will open for the Memorial Day Weekend beginning on Friday, May 28 at 12:00 Noon and will remain open through the Holiday Weekend. Due to the fact that many Missoula area schools will remain in session during the first two weeks of June, the pool will be closed on June 1, 2 & 3 and will reopen for the weekend on Friday, June 4, at 12:00 Noon. The same schedule will be in effect for the following week – Pool closed on June 7, 8, 9 & 10 and reopen for the remainder of the season on Friday, June 11 at 11:00 AM. The pool season end/closing date is Tuesday, September 7.

BYLAWS COMMITTEE NOTES

BY PENNY RITCHIE, CHAIR

In 2009 the MCC Board proposed, and the members approved, the creation of a new Bylaws Committee so that we might have a designated committee whose purpose is to review, on a priority basis, our Bylaws and Rules and Regulations. Numerous bylaws revisions over the years have dealt with necessary changes, but it has been some time since there was a complete review of the Bylaws.

The Bylaws Committee began meeting in January in long brainstorming sessions discussing needed changes and addressing member input. In addition to improving the functionality of the bylaws, the committee identified several important areas that deserved review. These were:

- Member meetings and distribution of information prior to balloting to improve member input and awareness of issues;
- Procedures for review of all capital spending proposals;
- Citing the maintenance of a quality golf course as one of the primary purposes of MCC;
- Voting, including quorum requirements and votes required for major issues;
- Member approval of major changes to the golf course;
- Transparency of committee and Board actions;
- Compliance with Montana Code Annotated as it pertains to non-profit organizations.

The committee is nearly ready to provide a draft document to all members for their comment and review, and will also host one or more sessions to answer questions and solicit member input. While the focus for this year is bylaws revisions, the committee is also interested in comments regarding Rules and Regulations, which it will address later this year or in early 2011.

These are your bylaws, and it is important that we have as much member input as possible. Please plan to review the draft bylaws when they are distributed, and provide the committee your insights and comments, either in person or in writing. In the meantime, please feel free to express your opinion by calling or emailing Ron Svein or me. We would appreciate hearing from you!

Missoula Country Club 2010 Golf Course Tournament Schedule

June	4	Friday	* Chamber of Commerce Tournament – course opens @ 3:00 PM
June	9	Wednesday	* MCC Ladies' Mixed PRO/AM – course opens @ 1:00 PM
June	12-13	Sat-Sun	* MCC Member-Member Tournament – course opens @ 2:00 PM
June	16	Wednesday	MCC Junior Lessons Begin
June	20	Sunday	MCC Father's Day Tournament – play not affected
June	21	Monday	MCC PRO/AM – course opens @ 4:00 PM
June	23	Wednesday	MCC WGA Guest Day – course opens @ 2:30 PM
June	26	Saturday	Montana Rail Link Tournament – course opens @ 2:30 PM
July	10-11	Sat-Sun	MCC Club Championship – course opens @ 2:00 PM
July	16-17	Fri-Sat	MCC Men's Invitational – course opens SAT. @ 3:00 PM
July	23	Friday	MCC Junior Tournament – course opens @ 11:30 AM
July	30	Friday	MCC Progressive Dinner – front nine closed @ 5:30 PM
August	4	Wednesday	MCC Helen Tremper Ladies' Invitational – course opens @ 3:00 PM
August	9	Monday	Missoula Junior Tour – course opens @ 12 Noon
August	13	Friday	Allegiance Insurance Tournament – course opens @ 3:00 PM
August	21-22	Sat-Sun	MCC Couples Chapman Tournament – course opens @ 2:30 PM
August	27	Friday	Lutheran Social Services Tournament – course opens @ 2:30 PM
Sept.	17	Friday	Grizzly Roundball Tournament – course opens @ 6:30 PM
Sept.	20	Monday	MCC Greens Aeration ½" Tine (weather dependant)

* Date Change or Cancellation TBD

PRO SHOP

BY SKIP KOPRIVICA
PGA GOLF PROFESSIONAL AND STAFF



We would like to thank you for your patience and loyalty during this difficult spring. By the time you receive this newsletter the golf course should be operational again, and I look forward to seeing everyone back in the swing of the season.

For a limited time we will be running a Member Appreciation Sale in the Pro Shop. All men's and women's clothing will be 30% off, all shoes will be 25% off, and golf balls by the dozen and hats will be 10% off. With the clubs we are not allowed to sell them for under the MAP price, so we will provide you with free golf balls, the amount depends on what you buy.

June is an exciting month for golf at Missoula

Country Club. Beautiful weather, warm days, and sunlight until after 10 p.m. make this an ideal time to tee it up. The golf shop has a wide variety of equipment, clothing, and accessories to help your game.

Our Junior golf program starts June 16, so make sure you get into the Pro Shop to sign up your junior golfers. The program is open to children and grandchildren of the members. Lessons will be every Wednesday for six weeks from 3 p.m. to 5 p.m. The last week of the program we will have a tournament which will fall on Friday, July 23. All the Juniors in the program are welcome to play, and we will have a lunch and awards ceremony following play that will be open to the juniors, parents and grandparents.

The Don Barnett Memorial Day Tournament and the Member-Member Tournament have been canceled for now. We are hoping to move them to a different date. We will keep everyone posted.

Skip Koprivica, Connor Sproull, Ryan Hoynacki and Staff

2010 SWIM LESSON SCHEDULE

Signup up with the Lifeguard Staff anytime during regular pool hours / 11:00 AM - 9:00 PM. Swim Lessons will be held from 9:00 AM to 11:00 AM during each of the 5 Sessions.

SESSION 1

June 14 – 24

Signup June 4 – June 13

SESSION 2

June 28 – July 8

Signup June 14 – June 27

SESSION 3

July 12 – July 22

Signup June 28 – July 11

SESSION 4

July 26 – August 5

Signup July 12 – July 25

SESSION 5

August 9 – August 19

Signup July 26 – August 8

LESSON COSTS

Private (1 Child) \$75 Per Two-Week Session

Semi-Private (2 Children)

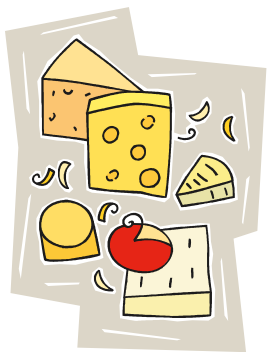
\$60 Per Two-Week Session



A LA CARTE

BY RICHARD KOLENDA
EXECUTIVE CHEF

MOLDY CHEESE



I've been asked on a number of occasions if it is safe to eat moldy cheese. Hard cheese can generally be salvaged, but soft cheeses cannot. The toxins in the types of mold that grow on cheeses are mostly water-soluble, so they usually cannot travel far beyond the surface of harder

cheeses with low moisture levels.

To remove surface mold from a hard cheese such as cheddar, the general rule is to cut off all visible mold as well as an inch of the surrounding area, being careful to keep the knife out of the mold itself to prevent cross-contamination of other areas of the cheese. Of course, this works only if you have a big piece of cheese. Small pieces on which the mold has grown on multiple sides should be discarded.

Soft cheeses such as goat cheese, Brie or Camembert and wet, curd-like cheeses such as ricotta or cottage cheese should never be consumed once mold appears. Because most of the toxins produced by these uncultivated molds are water-soluble, they can easily travel beneath the surface of these high-moisture cheeses and contaminate the rest of the product. Cheeses that are injected with mold, such as blue cheese, should be discarded

once they start becoming slimy or softer than usual or exhibiting strange odors or colors.

My advice is never to buy more cheese than you can use in one or two weeks; the moister the cheese, the quicker it will spoil. As for storing most leftover cheese, I have found that wrapping it in parchment paper and then in foil is the most effective method, but a sealed zipper-lock bag is a very close (and much easier) second. Whichever method you choose, the cheese is best kept in the crisper drawer of the refrigerator. One more thing: Freezing doesn't kill mold. While freezing might slow down the mold's growth, it will not destroy any of the toxins the mold has already produced.



I'M ALRIGHT

By Carl Spackler



Last fall a new neighbor moved across the street from me. Jack is a stay-at-home Dad with two small children, and his wife is a physician. He's pretty much starved for adult interaction, so whenever he's not talking with the young mothers in the neighborhood, I'm his designated listener. I was trying to recruit him into the Club, so I gave him a few old newsletters to read. He really liked my column, and was anxious to try some of my suggestions – especially "date night." I was just happy to hear that someone had actually read my ramblings, and took it to heart.

The other day, Jack walked out of his house with a big brace on his knee, so I inquired what happened. He said he wanted to introduce a little excitement into date night, so he dressed up like a cat burglar and came in through the bedroom window. Turns out she didn't know Jack! Fortunately, he was able to get the mask off before she hit his head, but after she had whacked him in the knee with an aluminum baseball bat.

I'm all for enthusiasm and excitement, so ENJOY LIFE, but exercise a little common sense!

Comments: cspackler@rocketmail.com

**Restaurant & Bar Lounge
Hours of Operation
June, July, August 2010**

Sunday, Monday & Wednesday

Lunch Menu 11 am to 7 pm

Bar Service 11 am to 9 pm

**Tuesday, Thursday,
Friday & Saturday**

Lunch Service 11 am to 4 pm

Dinner Service 4 pm to 9 pm

Bar Service 11 am to 9 pm



MCC DIRECTORY CHANGES

NEW MCC DIRECTORIES ARE IN PROGRESS

NEW

(These members were not on the list in the April newsletter)

Ault, Jim – R

Dixon, R. "Strawn" - A

Green, Joshua/Green Prop. Holdings - B

Kamura, Richard - R

Khoury, David – R

Lindsay, Robbe – R

McLaughlin, William – R

Meier, Justin - A

Mikkola, Mason - R

Mostad, Gene/Mostad Construction - B

Muller, Scott – R

Perrin Sasha - R

Rupert, Randy - R

Ryan, Kyle - R

Ryan, M. Casey – R

Solari, Kurt – R

Stensrud, Kyle - R

Tipp, Bryan - R

Williams, Pat – R

Worster, Scott – R

University Motors – CS

Tody Hubbard

NEW

(From the 5/19/10 Board Meeting)

Alt, Cody – A

Burke, Edward - S

Duvall, Janet - NR

Lawhorn, Timothy - R

RESIGNED

Tim Calcagno/Montana

Compounding Pharmacy - B

Mark Denton – R

Robert Disney - S

H. Ross Gibson – R

Laird Cory – R

Keating, John - R

Marbut, Mike – R

Wayne Tinkle/UM Athletics - B

Chip Zimmer - R

MEMBERSHIP STATUS AS OF 5/19/10

PLAYING MEMBERSHIPS	437	(450 max.)
REGULAR	355	
BUSINESS	66	(80 max.)
ASSOCIATE	16	(40 max.)
NON RESIDENT	16	(25 max.)
SOCIAL	49	(120 max.)
BUSINESS SOCIAL	3	(20 max.)

WOMEN'S GOLF ASSOCIATION

NEWS FROM THE RED TEES

BY JEAN HANICH
MCCWGA PRESIDENT

WOW! What an unusual Spring at the Club! I hope by the time this Newsletter is out we will all be enjoying golf on new, improved grass.

The Tuesday League Ladies have been enjoying the two-for-one drinks, a chance to get out of the house and stay dry in the Clubhouse (we haven't had a nice Tuesday yet, weather-wise). The pictures show the Ladies enjoying the golf clinic. We just got inside when the rain hit!

Days Play Ladies are still enjoying cards. The Kick-off Breakfast was well attended. The pictures show everyone was warm and dry. Temperatures outside were below 32 degrees. BURR! Too cold for golf but not for Mimosas.

See you on the course.





PO. Box 3057 • Missoula, MT 59806
406-251-2404
www.missoulacountryclub.com

JUNE 2010

MISSOULA COUNTRY CLUB



SUNDAY	MONDAY	TUESDAY	WEDNESDAY	THURSDAY	FRIDAY	SATURDAY
		1 11 am – 9 pm LADIES' LEAGUE POOL CLOSED Dinner Menu	2 11 am – 7 pm LADIES' DAY PLAY POOL CLOSED Lunch Menu	3 11 am – 9 pm MEN'S LEAGUE DINNER POOL CLOSED	4 11 am – 9 pm HAPPY DAYS 4-7 PRIVATE FUNCTION DINNER SERVICE AVAILABLE IN LOUNGE POOL OPEN	5 11 am – 9 pm POOL OPEN
6 11 am – 7 pm POOL OPEN Lunch Menu	7 11 am – 7 pm POOL CLOSED Lunch Menu	8 11 am – 9 pm LADIES' LEAGUE POOL CLOSED Dinner Menu	9 11 am – 7 pm LADIES' DAY PLAY POOL CLOSED Lunch Menu	10 11 am – 9 pm MEN'S LEAGUE POOL CLOSED	11 11 am – 9 pm EVENING FUNCTION IN MILLER BARBER LIBRARY POOL OPEN FOR SEASON	12 11 am – 9 pm
13 11 am – 7 pm Lunch Menu	14 11 am – 7 pm Lunch Menu	15 11 am – 9 pm LADIES' LEAGUE Dinner Menu	16 11 am – 7 pm JUNIOR LESSONS BEGIN LADIES' DAY PLAY Lunch Menu	17 11 am – 9 pm MEN'S LEAGUE	18 11 am – 9 pm	19 11 am – 9 pm PRIVATE FUNCTION DINNER SERVICE AVAILABLE IN MILLER BARBER LIBRARY
20 11 am – 7 pm FATHER'S DAY Lunch Menu	21 11 am – 7 pm MCC PRO-AM COURSE OPENS @ 4:00 PM Lunch Menu	22 11 am – 9 pm LADIES' LEAGUE Dinner Menu	23 11 am – 7 pm WGA GUEST DAY COURSE OPENS @ 2:30 PM JUNIOR LESSONS Lunch Menu	24 11 am – 9 pm MEN'S LEAGUE	25 11 am – 9 pm	26 11 am – 9 pm MRL GOLF OUTING COURSE OPENS @ 2:30 PM PRIVATE FUNCTION DINNER SERVICE AVAILABLE IN MILLER BARBER LIBRARY
27 11 am – 7 pm Lunch Menu	28 11 am – 7 pm Lunch Menu	29 11 am – 9 pm LADIES' LEAGUE Dinner Menu	30 11 am – 9 pm JUNIOR LESSONS LADIES' DAY PLAY Dinner Menu	1 11 am – 9 pm JULY MEN'S LEAGUE	2 11 am – 7 pm Lunch Menu	3 11 am – 7 pm Lunch Menu
4 11 am – 7 pm INDEPENDENCE DAY Lunch Menu	5 11 am – 7 pm Lunch Menu	6 11 am – 9 pm LADIES' LEAGUE Dinner Menu	7 11 am – 7 pm JUNIOR LESSONS LADIES' DAY PLAY Lunch Menu	8 11 am – 9 pm MEN'S LEAGUE	9 11 am – 9 pm PRIVATE FUNCTION DINNER SERVICE AVAILABLE IN MILLER BARBER LIBRARY	10 11 am – 9 pm CLUB CHAMPIONSHIP